

**MPP7 Antibody (N-term)**  
**Purified Rabbit Polyclonal Antibody (Pab)**  
**Catalog # AP20581a**

**Specification**

---

**MPP7 Antibody (N-term) - Product Information**

Application	WB, IHC-P, FC,E
Primary Accession	<a href="#">Q5T2T1</a>
Reactivity	Human
Host	Rabbit
Clonality	Polyclonal
Isotype	Rabbit IgG

**MPP7 Antibody (N-term) - Additional Information**

**Gene ID** 143098

**Other Names**

MAGUK p55 subfamily member 7, MPP7

**Target/Specificity**

This MPP7 antibody is generated from a rabbit immunized with a KLH conjugated synthetic peptide between 2-36 amino acids from the N-terminal region of human MPP7.

**Dilution**

WB~~1:1000

IHC-P~~1:25

FC~~1:25

E~~Use at an assay dependent concentration.

**Format**

Purified polyclonal antibody supplied in PBS with 0.09% (W/V) sodium azide. This antibody is purified through a protein A column, followed by peptide affinity purification.

**Storage**

Maintain refrigerated at 2-8°C for up to 2 weeks. For long term storage store at -20°C in small aliquots to prevent freeze-thaw cycles.

**Precautions**

MPP7 Antibody (N-term) is for research use only and not for use in diagnostic or therapeutic procedures.

**MPP7 Antibody (N-term) - Protein Information**

**Name** MPP7

**Function** Acts as an important adapter that promotes epithelial cell polarity and tight junction formation via its interaction with DLG1. Involved in the assembly of protein complexes at sites of

cell-cell contact.

### Cellular Location

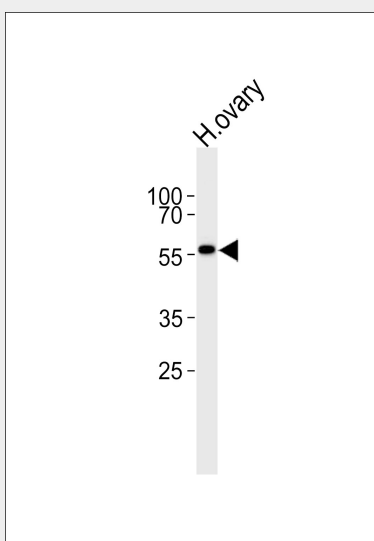
Membrane; Peripheral membrane protein. Lateral cell membrane; Peripheral membrane protein. Cell junction, tight junction Cell junction, adherens junction. Cytoplasm, cell cortex. Cytoplasm  
Note=In epidermal cells, detected primarily at the lateral cell membrane.

### MPP7 Antibody (N-term) - Protocols

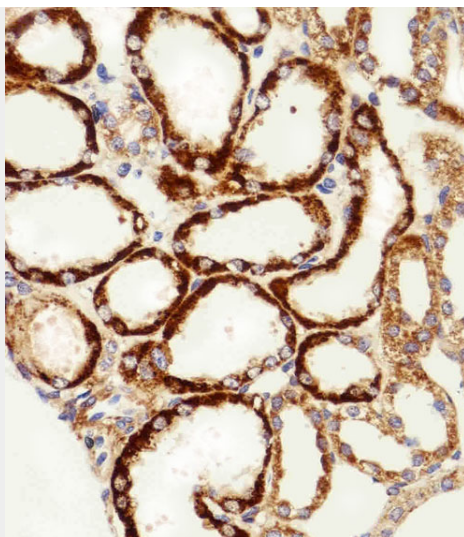
Provided below are standard protocols that you may find useful for product applications.

- [Western Blot](#)
- [Blocking Peptides](#)
- [Dot Blot](#)
- [Immunohistochemistry](#)
- [Immunofluorescence](#)
- [Immunoprecipitation](#)
- [Flow Cytometry](#)
- [Cell Culture](#)

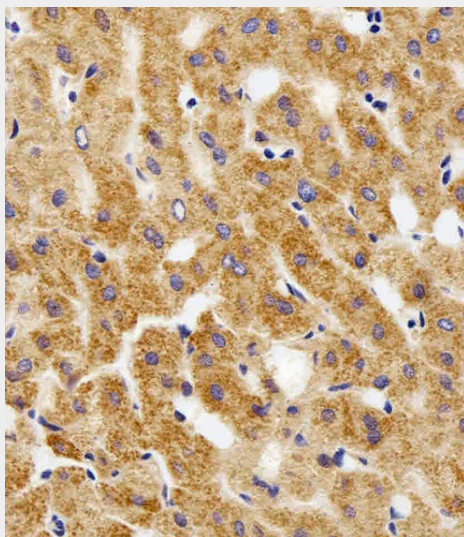
### MPP7 Antibody (N-term) - Images



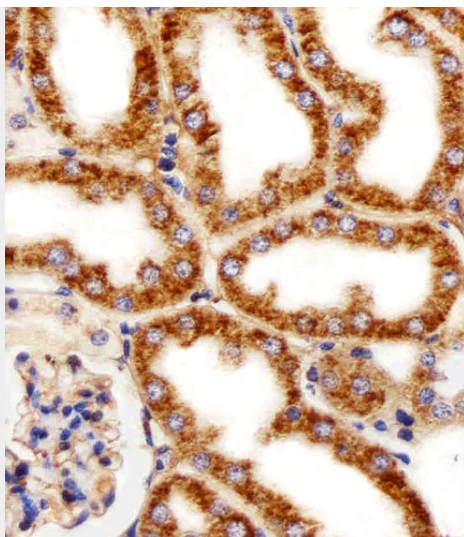
Western blot analysis of lysate from human ovary tissue lysate, using MPP7 Antibody (N-term) (Cat. #AP20581a). AP20581a was diluted at 1:1000. A goat anti-rabbit IgG H&L(HRP) at 1:5000 dilution was used as the secondary antibody. Lysate at 35ug.



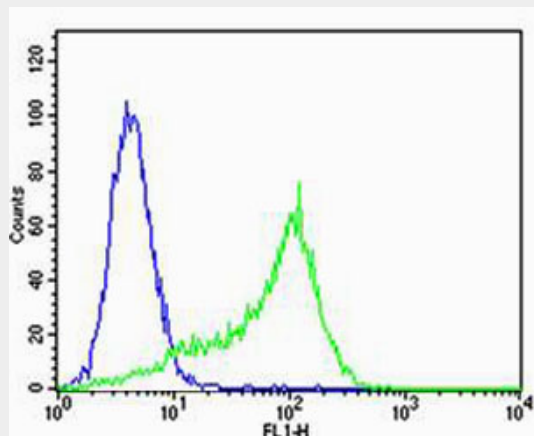
Immunohistochemical analysis of paraffin-embedded H. kidney section using MPP7 Antibody (N-term)(Cat#AP20581a). AP20581a was diluted at 1:100 dilution. A peroxidase-conjugated goat anti-rabbit IgG at 1:400 dilution was used as the secondary antibody, followed by DAB staining.



Immunohistochemical analysis of paraffin-embedded H. liver section using MPP7 Antibody (N-term)(Cat#AP20581a). AP20581a was diluted at 1:100 dilution. A peroxidase-conjugated goat anti-rabbit IgG at 1:400 dilution was used as the secondary antibody, followed by DAB staining.



Immunohistochemical analysis of paraffin-embedded M. kidney section using MPP7 Antibody (N-term)(Cat#AP20581a). AP20581a was diluted at 1:25 dilution. A peroxidase-conjugated goat anti-rabbit IgG at 1:400 dilution was used as the secondary antibody, followed by DAB staining.



Flow cytometric analysis of Hela cells using MPP7 Antibody (N-term)(green, Cat#AP20581a) compared to an isotype control of rabbit IgG(blue). AP20581a was diluted at 1:25 dilution. An Alexa Fluor® 488 goat anti-rabbit IgG at 1:400 dilution was used as the secondary antibody.

### **MPP7 Antibody (N-term) - Background**

Acts as an important adapter that promotes epithelial cell polarity and tight junction formation via its interaction with DLG1. Involved in the assembly of protein complexes at sites of cell-cell contact.

### **MPP7 Antibody (N-term) - References**

- Ota T.,et al.Nat. Genet. 36:40-45(2004).
- Deloukas P.,et al.Nature 429:375-381(2004).
- Mural R.J.,et al.Submitted (SEP-2005) to the EMBL/GenBank/DDBJ databases.
- Katoh M.,et al.Int. J. Mol. Med. 13:333-338(2004).
- Wells C.D.,et al.Cell 125:535-548(2006).